



Price band £700,000 to £735,000

Domonic Drive, New Eltham, SE9 3LL

Chattertons

EST 1893

Price band 700,000 to 735,000. Located in a great road which is always popular on the border of New Eltham and Chislehurst is this extended 1930s semi detached house with a wondrously long garden with detached garden room at the end which offers a great space with living room sitting detached in a little world of it's own. The actual house features 4 bedrooms, 2 bathrooms, large ground floor cloakroom, 2 receptions and open plan kitchen with bi fold doors. Approached via a private driveway and integral garage this property would be perfect for a family. The house has gas central heating and double glazing and a really cool finish.



Extended 1930s semi detached house
4 bedrooms, 2 bathrooms and 2 receptions
Large garden
Detached summer house

Entrance hall
Oak flooring, under stairs storage cupboard

Lounge 13' 0" x 10' 10" (3.96m x 3.30m)
Double glazed window, wood flooring, radiator

Dining room 12' 0" x 9' 11" (3.65m x 3.02m)
Wood flooring, radiator

Kitchen diner 24' 1" x 16' 8" (7.34m x 5.08m)
Double glazed window to rear, bi fold doors to the outside, 2 skylight windows, double glazed window to the side, fitted wall and base units with stainless steel single drainer sink unit with mixer taps, built in double oven and gas hob with extractor hood, wood flooring

Ground floor cloakroom
Low level wc, pedestal wash hand basin with mixer taps, wood flooring

Stairs to the first floor
Carpet

Integral garage with private driveway
Border of New Eltham and Chislehurst
Cool finish
Great family house

Bedroom 1 12' 11" x 10' 6" (3.93m x 3.20m)
Double glazed window, radiator, carpet

En suite
Frosted double glazed window, shower, pedestal wash hand basin, low level wc, tiled floor and walls

Bedroom 2 13' 0" x 10' 8" (3.96m x 3.25m)
Double glazed bay window, radiator, carpet

Bedroom 3 14' 1" x 7' 6" (4.29m x 2.28m)
Double glazed window, radiator, carpet

Bedroom 4 8' 6" x 5' 10" (2.59m x 1.78m)
Double glazed window, radiator, carpet

Bathroom
Frosted double glazed window, panelled bath with mixer taps and shower attachment, pedestal wash hand basin with mixer taps, low level wc, shower cubicle, tiled walls and floor, chrome heated towel rail

Rear garden 114' 8" x 28' 11" (34.92m x 8.81m)
Laid to lawn with deck, great range of plants and shrubs, outside light, side access, timber built shed

Garden room 19' 8" x 16' 1" (5.99m x 4.90m)
Detached with great insulation, living roof

Integral garage 19' 4" x 8' 2" (5.89m x 2.49m)
Up and over door, private driveway





Domonic Drive, London, SE9

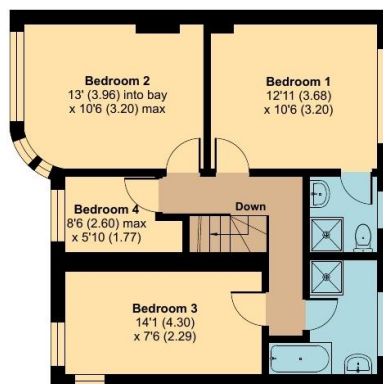
Approximate Area = 1316 sq ft / 122.3 sq m

Garage = 157 sq ft / 14.6 sq m

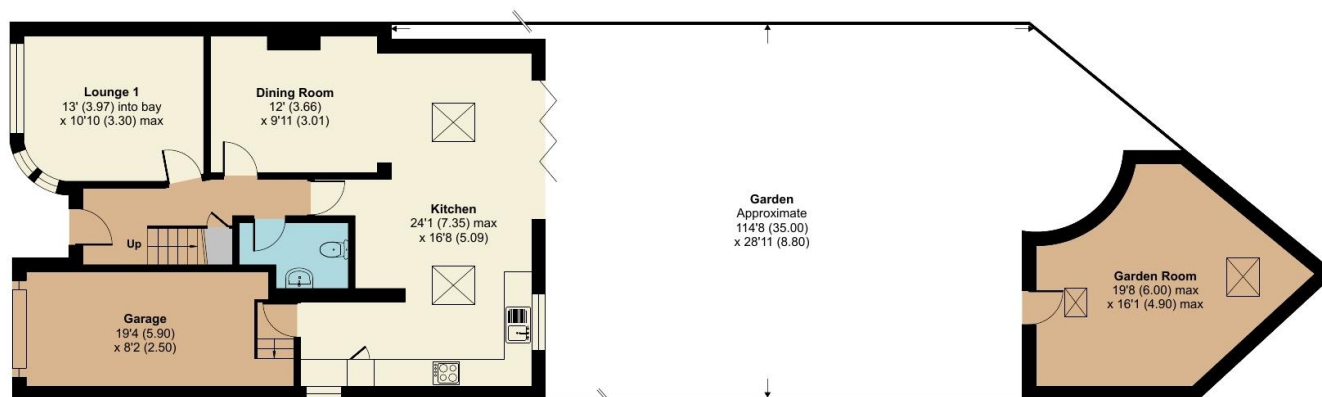
Outbuilding = 218 sq ft / 20.2 sq m

Total = 1691 sq ft / 157.1 sq m

For identification only - Not to scale



FIRST FLOOR



GROUND FLOOR



Floor plan produced in accordance with RICS Property Measurement 2nd Edition, incorporating International Property Measurement Standards (IPMS2 Residential). © nitchecom 2026. Produced for Chattertons Estate Agents Ltd. REF: 1393634

All dimensions are approximate and are quoted for guidance only, their accuracy cannot be confirmed. Reference to appliances and/or services does not imply they are necessarily in working order or fit for the purpose. Buyers are advised to obtain verification from their solicitors as to the freehold/leasehold status of the property, the position regarding any fixtures and fittings and where the property has been extended / converted as to Planning approval and Building Regulation compliance. These particulars do not constitute or form part of an offer or contract, nor may they be regarded as representations. All interested parties must themselves verify their accuracy. Where a room layout is included this is for general guidance only, it is not to scale and its accuracy cannot be confirmed. Ref Code:

020 8859 4000

405 Footscray Road

New Eltham SE9 3UL

sales.neweltham@chattertons.org.uk

Chattertons

EST 1893